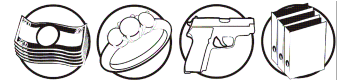


## Light strongboxes KPL, class III-IV



### Purpose:

The light strongboxes KPL are characterized by a high level of protection of their content. They are designed for storage of cash, cheques, bills of exchange, securities, documents and other important and valuable objects. The light strongboxes are the most often used in banks, financial institution and cash desk rooms.

### Storage certificates:

- Valuables according to the European Standard EN 1143-1, classes III-IV.
- Classified documents, classes A, B and C.
- Fire-arms and ammunition according to the requirements of IMP - KT/101/IMP/2004(6).

### Product description:

Warranty period: 24 months.

- A multilayer steel structure filled with a special ThermControl® composite of anti-burglar and fire-resistant properties.
- An internal composite plate and a thermo-active seal, preventing from increasing the temperature inside the cash box, constitute an additional insulation against fire.
- A developed bolting system blocking the opening of the door at the attempt of burglary.
- The highest quality mechanisms protecting against boring through and removing the lock and bolts.
- The certified locks: optionally key, code or electronic lock.
- A possibility to install any two locks (does not apply to KPML strongbox – III grade).
- An opening allowing the cash box to be fixed to the base with pull-out strength of forces not less than 5 tons.
- The production by means of laser technologies ensures an exceptional precision of workmanship and reliability.
- Warranty period: 24 months.

# Light strongboxes KPL, class III-IV

---



## How does unique ThermControl® packing function

The unique ThermControl® filling of a formula applied for the patent protection protects the content of the strongbox against fire and against an attack by using thermal tools

The innovative ThermControl® formula causes that the filling does not practically heat up despite a direct contact with fire and high temperature effect. The used ThermControl® filling in connection with internal insulation plates ensures the maintenance of safe temperature inside the strongbox in case of fire.

Additionally, the ThermControl® filling thanks to its exceptional properties allows to reduce the weight of light strongboxes by a half in relation to the products hitherto available on the market, at the same time keeping a level of anti-burglar protection required for a given class.

## Basic equipment

- Key lock - class B with two keys - in class III.
- Key lock - class B with two keys, and code mechanical lock – class B - in class IV.
- Key to change the code of installed code mechanical locks.
- Shelves with adjustment of hanging height; maximum load of shelves: 50 [kg].
- Finishing lead of alarm installation – for the cash box in class IV.
- Fasteners for the shelves.
- Installation opening  $\varnothing$  29,5 mm in the bottom of the cash box allowing to install an anchor appropriate for a given class.
- Instruction manual of installed code locks (mechanical, electronic).
- Operation manual of the product with warranty card.

---

## Additional equipment:

- In class III: replacement of key lock with code lock or electronic lock.
- In class III and IV: possibility to use two locks in a selected combination - KK, CC, KE, CE, EE. (does not apply to KPML strongbox – III class)
- Small deposit box.
- Moved shelf.
- Drawer;
- Shelf with holders for fire-arms.
- Frame drawer for suspension files;
- Sealing;
- Sensors to connect alarm signalling equipment.
- Finishing lead of alarm installation – for the cash box in class IV.

## Light strongboxes KPL, class III-IV

- System of internal lockers.
- Single sleeve anchor M16x200 to fix to the base – in class III.
- Double sleeve anchor M20x250 to fix to the base – in class IV.
- Internal insert cash box.

### Locks types:



key



coded



electronic

### Standard colours:

- Light-grey RAL 7035 (standard at order if colour is not marked )
- Black RAL 9005 (it should be marked at order, free of charge)

\*Against individual orders: all colours of RAL palette (powder lacquer).

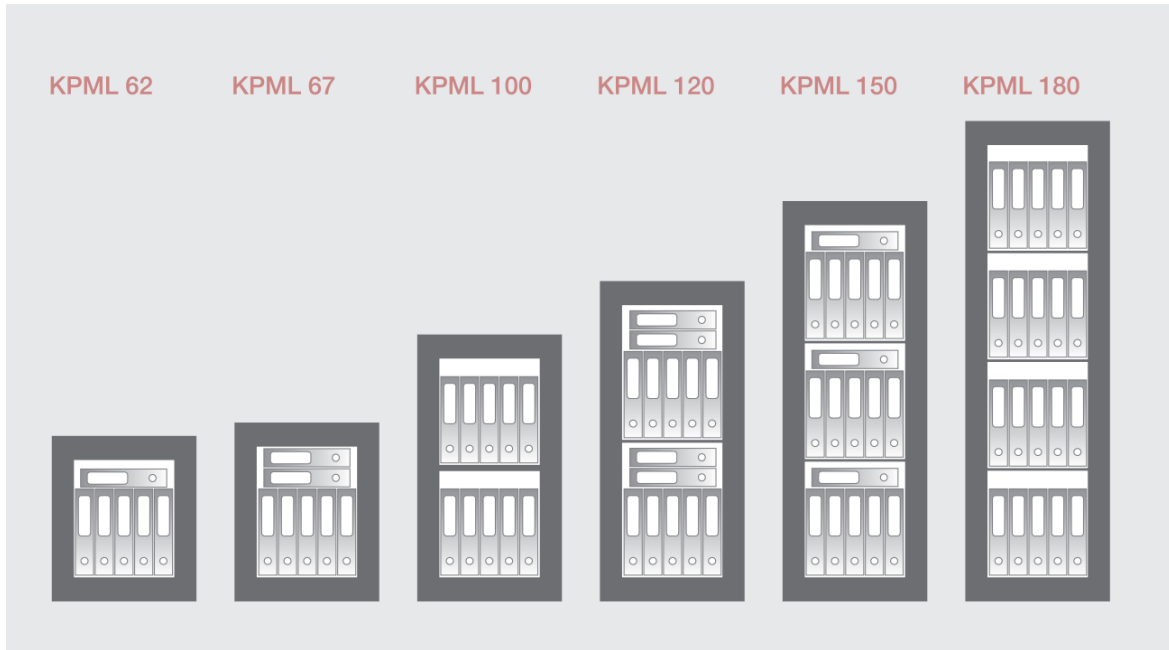
### Technical data:

Model	Outer dimensions			Internal dimensions			Weight	Cap acit ...m
	W	S	G	W	S	G	Kl. III	
<b>KPML 53</b>	530	550	515	350	384	300	165	40
<b>KPML 62</b>	620	550	515	440	384	300	185	51
<b>KPML 67</b>	670	550	515	490	384	300	195	56
<b>KPML</b>	1,00	550	515	820	384	300	270	94
<b>KPML</b>	1,20	550	515	1,02	384	300	315	118
<b>KPML</b>	1,50	550	515	1,32	384	300	385	152
<b>KPML</b>	1,80	550	515	1,62	384	300	450	187

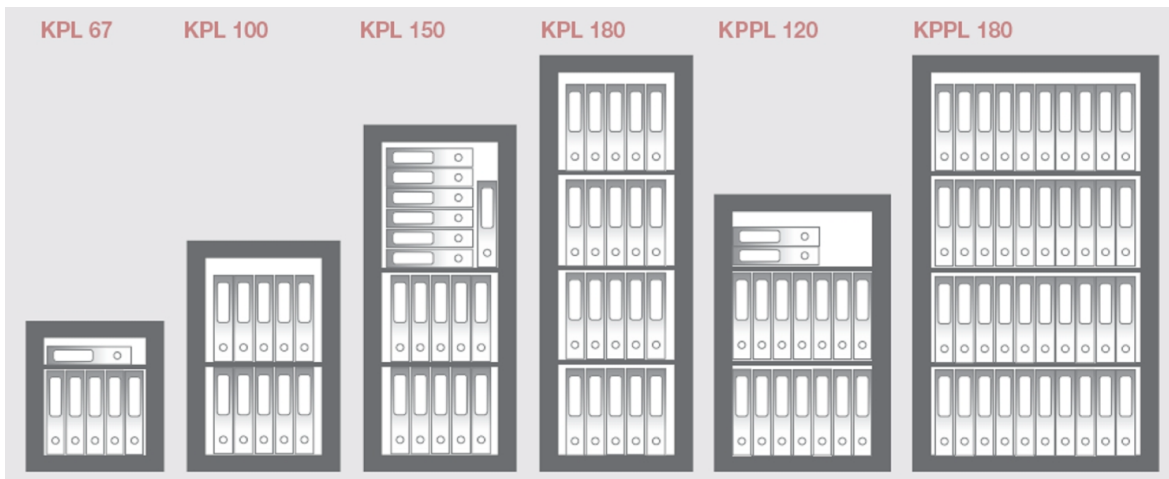
Model	Outer dimensions			Internal dimensions			Weight		Cap acit ...m
	W	S	G	W	S	G	Cl. III	Cl. IV	
<b>KPL 62</b>	620	616	615	440	450	400	225	-	79
<b>KPL 67</b>	670	616	615	490	450	400	238	268	88
<b>KPL 100</b>	1000	666	615	820	500	400	338	326	164
<b>KPL 120</b>	1,20	666	615	1,02	500	400	395	445	204
<b>KPL 150</b>	1,50	666	615	1,32	500	400	481	541	264
<b>KPL 180</b>	1,80	666	615	1,62	500	400	561	633	324
<b>KPPL 120</b>	1,20	766	765	1,02	600	550	497	562	337
<b>KPPL 150</b>	1,50	766	765	1,32	600	550	602	680	436
<b>KPPL 180</b>	1,80	766	765	1,62	600	550	698	789	535
<b>KPPPL</b>	1,80	1066	765	1,62	900	550	878	978	802

# Light strongboxes KPL, class III-IV

Capacity of KPML models:



Capacity of KPL models:



Model	Shelves [pieces]	Small deposit box* SMART 21/29	Door handle	
			W	Ø
<b>KPML 62</b>	1	YES	36	125
<b>KPML 67</b>	1	YES	36	125
<b>KPML 100</b>	2	YES	36	125
<b>KPML 120</b>	3	YES	36	125

## Light strongboxes KPL, class III-IV

<b>KPML 150</b>	4	YES	36	125
<b>KPML 180</b>	4	YES	36	125

Model	Shelves [pieces]	Small deposit box* SMART 21/29/44	Door handle	
			W	Ø
<b>KPL 62</b>	1	YES	36	125
<b>KPL 67</b>	1	YES	36	125
<b>KPL 100</b>	2	YES	36	125
<b>KPL 120</b>	3	YES	36	125
<b>KPL 150</b>	4	YES	36	125
<b>KPL 180</b>	4	YES	36	125
<b>KPPL 120</b>	3	YES	36	125
<b>KPPL 150</b>	4	YES	36	125
<b>KPPL 180</b>	4	YES	36	125
<b>KPPPL 180</b>	4	YES	36	125

Small deposit box model*	Outside dimensions [mm]		
	W	S	G
<b>SMART 21</b>	200	210	290
<b>SMART 29</b>	200	295	290
<b>SMART 44</b>	200	440	290

\* A small deposit box is individually locked by means of key lock.

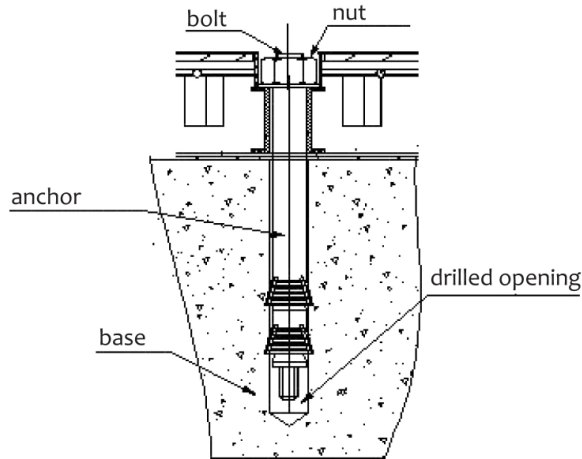
Model	Door opening radius R [mm]	Door clearance [mm] cl. III	
		W	S
<b>KPML 62</b>	531	490	381
<b>KPML 67</b>	531	540	381
<b>KPML 100</b>	531	570	381
<b>KPML 120</b>	531	1,070	381
<b>KPML 150</b>	531	1,370	381
<b>KPML 180</b>	531	1,670	381

Model	Door opening radius R [mm]	Door clearance [mm] cl. III	
		W	S
<b>KPL 62</b>	597	490	454
<b>KPL 67</b>	597	540	454
<b>KPL 100</b>	647	570	504
<b>KPL 120</b>	647	1,070	504
<b>KPL 150</b>	647	1,370	504
<b>KPL 180</b>	647	1,670	504
<b>KPPL 120</b>	747	1,070	604
<b>KPPL 150</b>	747	1,370	604
<b>KPPL 180</b>	747	1,670	604
<b>KPPPL 180</b>	1,047	1,670	904

Installation to the base:

# Light strongboxes KPL, class III-IV

Cash desk is installed to the base with the help of single steel stretcher connector (Figure 1).



**REMARK:** The steel stretcher connector should be seated in the base to not lower than 130 mm depth in min. B15 concrete

- **In order to install cash box in base it is necessary to:**
  1. Position the case box in its destination place.
  2. Remove plug from the opening in product bottom.
  3. Drill opening in the base through the opening in product to the depth corresponding to the stretcher connector length.
  4. Set up the cash box in a way making the opening in cash box bottom and opening in base aligned.
  5. Insert the anchor and screw on a nut and next screw-in bolt with the help of screwdriver and tighten the nut.
  6. Cover the opening with plug.
- **In the case cash box is too small to drill openings through openings in the cash box (not enough space to insert the driller to the cash box inside (e.g. in respect of built in jewel-boxes) it is necessary to:**
  1. Measure the opening spacing in the cash box.
  2. Trace opening position in the base.
  3. Bore opening in the base to the depth as corresponding to the stretcher connector length.
  4. Set up the cash box in a way making the opening in cash box bottom and opening in base aligned.
  5. Insert anchor and tighten up the nut. In the case stretcher connector bolt protrudes above bottom inside the cash box, nut should be loosen, bolt should be screwed in with the help of screwdriver and the nut should be tighten again.
  6. Cover the opening with plug.

## Installation of the small eposit box:

- **The following activities should be done in order to install the jewel-box:**
  1. Open the cash-box.
  2. Insert catches for jewel-box support into openings in inner frame.
  3. Insert the jewel-box into the cash box interior.

## Light strongboxes KPL, class III-IV

---

4. Openings in the inner frame wall will be drilled through the openings in back jewel-box wall after positioning the jewel-box at proper height and supporting it on catches.
5. The jewel-box should be riveted to the back wall of inner frame in prepared installation openings.
6. Close the cash-box.

### Handling the strongbox – opening:

- **Opening the products if furnished with key lock only:**

1. Insert the key into lock opening.
2. Turn the key by angle over 90° (over 1/4 revolution) to the right. The met resistance gives evidence for lock opening. The key has to be left in lock (the key lock design makes impossible to take out key in lock opening position).
3. Turn the key by an angle of about 30° (1/12 revolution) to the left. The met resistance gives evidence for unlocking the door mechanisms.
4. Product opening takes place after pulling the door towards the opening person.

- **Opening the products if furnished with coded lock only:**

1. Open the coded lock with the help of activities as described in the attached coded lock servicing instruction.
2. Turn the key by an angle of about 30° (1/12 revolution) to the left. The met resistance gives evidence for unlocking of the door mechanisms.
3. Product opening takes place after pulling the door towards the opening person.

- **Opening the products if furnished with both key lock and coded lock:**

1. Open the coded lock with the help of activities as described in the attached coded lock servicing.
2. Insert the key into lock opening.
3. Turn the key by angle over 90° (over 1/4 revolution) to the right. The met resistance gives evidence for lock opening. The key has to be left in lock (the key lock design makes impossible to take out key in lock opening position).
4. Turn the key by an angle of about 30° (1/12 revolution) to the left. The met resistance gives evidence for unlocking the door mechanisms.
5. Product opening takes place after pulling the door towards the opening person.

- **Opening products if furnished with two key locks:**

1. Insert the key into the first lock opening.
2. Turn the key by angle over 90° (over 1/4 revolution) to the right. The met resistance gives evidence for lock opening. The key has to be left in lock (the key lock design makes impossible to take out key in lock opening position).
3. Open the other lock acting as above.
4. Turn the key by an angle of about 30° (1/12 revolution) to the left. The met resistance gives evidence for unlocking the door mechanisms.
5. Product opening takes place after pulling the door towards the opening person.

---

### Handling the strongbox– closing:

- **Closing the products if furnished with key lock only:**

1. Grasp the handwheel (bolts should be hidden), close the door pressing it against the cash box, turn the handwheel home to the right. Door interlocking occurs.
2. Turn the key by an angle of over 90° (1/4 revolution) to the left. The met resistance gives evidence for lock closing. The key should be taken out and the product closing takes place.

# Light strongboxes KPL, class III-IV

---

- **Closing products if furnished with coded lock only:**
  1. Grasp the handwheel (bolts should be hidden), close the door pressing it against the cash box, turn the handwheel home to the right. Door interlocking occurs.
  2. Close the coded lock with the help of activities as described in the attached coded lock servicing instruction. The product closing takes place.
- **Closing the products if furnished with both key lock and coded lock:**
  3. Grasp the handwheel (bolts should be hidden), close the door pressing it against the cash box, turn the handwheel home to the right. Door interlocking occurs.
  1. Turn the key by an angle of over 90° (1/4 revolution) to the left. The met resistance gives evidence for lock closing. The key should be taken out.
  2. Close the coded lock with the help of activities as described in the attached coded lock servicing instruction. The product closing takes place.
- **Closing the products if furnished with two key locks:**
  1. Grasp the handwheel (bolts should be hidden), close the door pressing it against the cash box, turn the handwheel home to the right. Door interlocking occurs.
  2. Turn the key by an angle of over 90° (1/4 revolution) to the left. The met resistance gives evidence for lock closing. The key should be taken out.
  3. Close the other lock acting as above. The product closing takes place.

---

## Handling the jewel-box:

- **Opening the jewel-box:**
  1. Insert the key to lock, turn the key by an angle of over 90° (1/4 revolution) to the right.
  2. Jewel-box opening takes place after pulling the door towards the opening person.
- **Closing the jewel-box:**
  1. Press the door against the jewel-box frame.
  2. With the help of any lock key by an angle of over 90° (1/4 revolution) to the left; the met resistance gives evidence for lock closing. The key should be pulled out, jewel-box is closed.

---

## Usage:

- Products usage should be in rooms protected against atmospheric factors, situated far from substances of corroding impact to metals. Relative humidity in room – up to 75%. The device may operate in rooms of temperature between +5°C to +40°C.
- When closing or opening the product, attention should be paid to movable elements, e.g.: drawer, door. Improper usage can bring to body injury, such as e.g.: fingers, in the case they are left between drawer and cabinet frame.
- In the time of door closing, attention should be paid to position of bolts; bolts should be strictly hidden; if not, mechanisms could be durably damaged.
- The assembled locks and mechanisms may not be modified under the pain of guarantee loss.
- Only authorised service or a user possessing written service permission may install locks and mechanisms in the time of guarantee period.
- Replacement of the whole lock is recommended in the case keys are needed to be replaced.
- Attention should be paid to the safe setting in a way making impossible for door to strike obstacles directly.

## Light strongboxes KPL, class III-IV

---

- Locking mechanisms and locks should operate fluently and without jams. In the case there is any objection in relation to operation of subassemblies afore said, such fact should be reported to KONSMETAL service.
- In the case there are any objections in relation to the product delivered they should be reported to KONSMETAL service.
- It is not recommended to make modifications without the manufacturer's knowledge even after the guarantee period completion.

---

### Maintenance:

- **Door:**  
It is recommended to lubricate hinges with bearings lubricant if needed, not however rarer that once per three years. All hinges and friction pairs of the mechanisms should be lubricated once per three years with acid-free technical vaseline.
- **Frame:**  
In principle, the frame dos not require special preservation treatments. Wetted with mild detergent rag can be used for this purpose and the dried surface can be wiped dry.